

NO MORE SERVICE NEWSLETTER

Spring 2022

Edition number 2

No More Service Youth

No More Service has expanded since our last newsletter; it is a really exciting time for us! The lovely Shane, Bonnie and Chloe have joined our team; here is a breakdown of their roles -

Shane Dimmock – NMS Support Worker (Offenders) covering Stevenage

Shane is working closely with Stevenage Borough Council's Housing Options Team supporting individuals approaching the Council who have been convicted of an offence within the last 12 months. His role is to support those individuals into the private rent sector in Stevenage; support with any addictions, aid with finances; explore employment and education options, maintaining their tenancy and rehabilitating them back into the community.



Bonnie Tavner- NMS Evolve Support Worker

Bonnie is working on the new Evolve which is an 8 week intervention programme for Domestic Abuse Perpetrators. More info below!



Chloe Lancaster – Marchant NMS Youth Support Worker, Welwyn Hatfield and East Herts & Broxbourne.

Chloe has joined the Youth team! We will be working with individuals from the ages of 11-21 (up to 25 with additional needs) in Broxbourne, East Herts and Welwyn Hatfield. Her role is to provide an array of interventions with both the young person and their family, with the aim to reduce their risk to themselves and the community.



Evolve Project

NMS now offers Evolve – an eight week programme for domestic abuse perpetrators across Hertfordshire. The programme runs parallel to the No More Service work, meaning that clients have one support worker for both elements, providing consistency and building on existing rapport.



EVOLVE

EVOLVE is an eight week programme for domestic abuse perpetrators across Hertfordshire.

This is 1:1 support which explores their triggers, signals, challenges perception and gives them the tools to work towards healthier relationships.

EVOLVE runs parallel to the No More Service which means the individual will have the same support worker who understands their situation, in contact with them continuously and advocating for them to all agencies involved.

Once the eight weeks is over, it doesn't mean the support is. The service-user will continue to have ongoing support through the No More Service.

To make referrals to the No More Service's EVOLVE programme you can email us via nomore@stevenage.gov.uk and we will send our referral form.

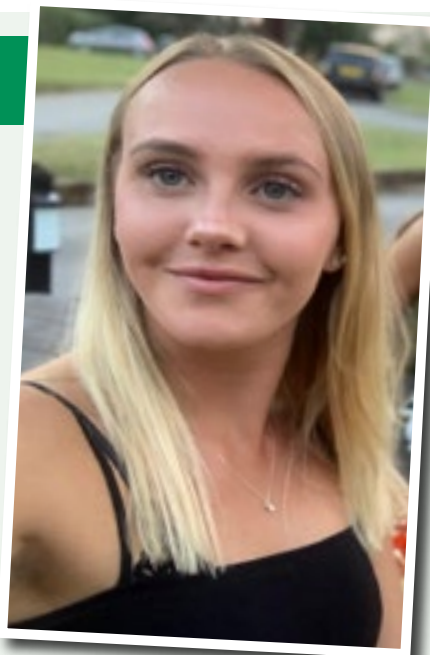
You need to have either written or verbal consent by the client (this has to be on the referral) for us to accept it.

NO MORE SERVICE

Spotlight on Bonnie

Tell us a little about what your role involves:

My name is Bonnie Tavner, I am a new support worker within the NMS. My role consists of running our new eight week programme called Evolve. Evolve supports perpetrators of domestic abuse through a healthy relationship programme alongside any other support they may need e.g. housing, alcohol/drugs support and food vouchers.



What's your favourite thing so far about working for NMS?

I feel that I have settled into the role well so far and I am really enjoying every aspect of the role, it is also nice to be working face to face with clients supporting them at a time of need. My mentor Kerry has been absolutely amazing with all the support and guidance she has given and the whole team have been so friendly and welcoming, which has made the start to my new role a lot easier.

What sort of work did you do before this?

My first support role started in Aylesbury as a family support worker, I loved this role so much but decided to work closer to home and I got a job at Oakland's College as a safeguarding officer, which I found extremely rewarding. My most recent job before starting at NMS was a learning mentor, within this role I would support 14-18 year olds with any welfare concerns and also deliver life skills sessions to them including child sexual exploitation, healthy relationships, sexual health, mental health and so on. I loved this role but missed the support side a lot, so that is when I decided to look elsewhere for jobs and I was lucky enough to be offered a role within NMS.

How do you relax outside of work?

Due to the demands of this type of job, I'm always trying to find new things outside of work to do. I enjoy baking and spending time with my family and friends.

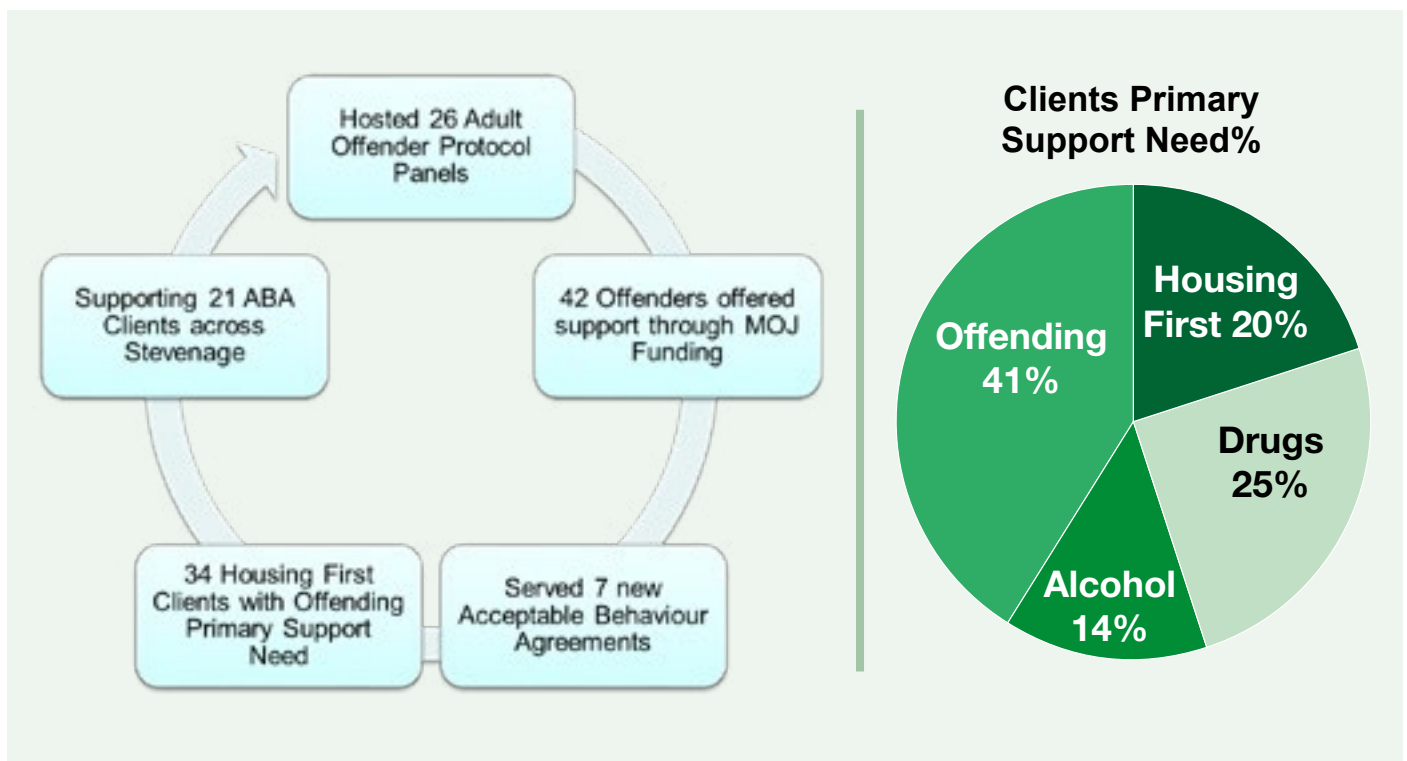


Suicide Prevention training

Partnership Development Officer Madeline Heredia recently achieved a City & Guilds qualification in delivering Suicide First Aid Training, meaning she is now able to train other professionals to 'spot the signs' and provide potentially life-saving interventions with clients and staff.

This work forms part of our county-wide suicide prevention strategy, funded in part by the Police and Crime Commissioner's office.

If you feel your staff would benefit from suicide first aid training, please contact community.safety@stevenage.gov.uk for more information.



No More Service Youth

The No More Service Youth offers complex needs support to individuals to tackle issues which negatively impact on their daily life. The Service comprises of 2 key support areas;

1. Youth Offenders support - Offering intensive support to prolific offenders and those associated with gang, knife crime, antisocial behaviour and county lines.
2. Drug and Alcohol support – offering intensive support to clients, assisting with substance misuse, offending, education and housing. This includes support from exploitation surrounding county lines.

Quick fire facts from NMSY

- 100% satisfaction rate from our young people
- 72% of all service users are Male;
- 28% are Female
- 88% of clients are from low social economic background
- 1 in 4 young people we work with have a mental health diagnosis

Just some interventions NMSY offers young people and their families across Hertfordshire

- Anger Management Intervention
- Challenging Thinking, Behaviours and Attitudes
- Voluntary Drug / Alcohol Testing
- Grooming Awareness
- Healthy Relationships
- Knife Crime Awareness
- Parenting Guidance and Boundaries
- Self Esteem Intervention
- Explore Future (Employment, Education, CV, Personal Statements, College/ University Applications)
- Positive Activities (Use of time) e.g. Sport or Creatively
- Onward referrals (e.g. safeguarding, mental health, CGL, SADA)



Art Club

Since November, NMS has been working with Junction 7 Creatives to host weekly sessions for service-users to create art and “be creative” in a safe environment, grab a warm drink and have a chance to socialise with other service-users who may have had similar life experiences.

This forms part of our wider objective to reduce social isolation for clients and encourage them to get back “out and about” now lockdown restrictions have ended

Junction 7 Creative directors and NMS support staff lead on sessions, with a sessions focusing on painting, colouring-in, mood board creation, poetry writing and more.





Drug and Alcohol News

A new taskforce to address student drug use has been launched by Universities UK (UUK) in partnership with Unite Students, GuildHE and Independent HE.

The aim is to make student drug use 'visible as a welfare and health issue' with consequences for future employability, mental health and exploitation. The team will study current approaches and international best practice in support, education and treatment, as well as looking at policing and improving understanding of supply, demand and patterns of use.

<https://www.drinkanddrugsnews.com/harm-reduction-based-taskforce-to-look-at-student-drug-use/>

'Woefully inadequate' labelling is keeping consumers in the dark about the sugar and calorie content of their drinks, according to new analysis commissioned by the Alcohol Health Alliance (AHA).

Just 20 per cent of the labels displayed the wine's calorie content - it was possible to consume almost the entire recommended daily limit of sugar from two medium-sized glasses of popular wines, the researchers state.

<https://www.drinkanddrugsnews.com/poor-labelling-keeping-drinkers-in-the-dark/>

The Home Affairs Committee is to investigate the impact of legislation designed to restrict drug use, including the Misuse of Drugs Act 1971 and Psychoactive Substances Act 2016, it has announced. The investigation will form part of a wider inquiry to 'examine illegal drug use in the UK and its effect on society'.

The Misuse of Drugs Act's 50th anniversary last year saw it labelled 'past its sell-by date' and 'not fit for purpose', while the 2016 act was also highly controversial. The inquiry also intends to look at the effectiveness of government strategies to address drug use and drug-related deaths and crime, including the new ten-year strategy launched late last year.

<https://www.drinkanddrugsnews.com/home-affairs-committee-to-investigate-impact-of-drug-legislation/>