

Performance report



Early help, brighter futures



Hertfordshire

covering the period
January 2021 – December 2021

www.hertfordshirefamiliesfirst.org.uk

Families First – assessment numbers



Family First Assessments (FFAs) are used to identify support for families who agree to multi-agency early help.



The number of FFAs undertaken across Hertfordshire has reduced over the last two years due to the Covid lockdowns. 833 assessments were finalised in the last 12 months, which included 1,983 children. 73.1% of children supported are White British.



Intensive Family Support teams (394) and schools / school partnerships (254) led on the majority of FFAs.



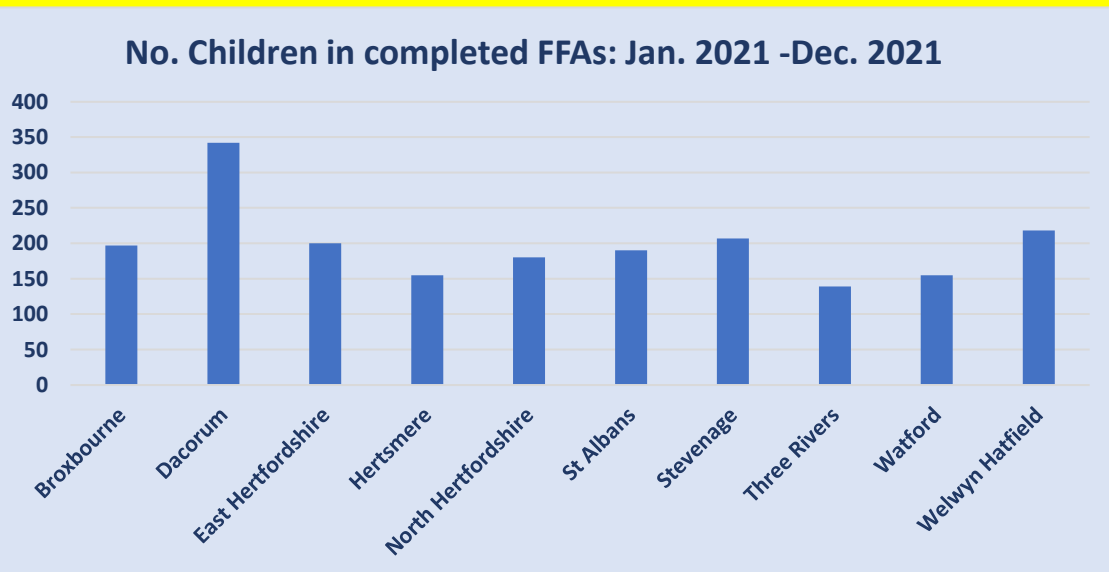
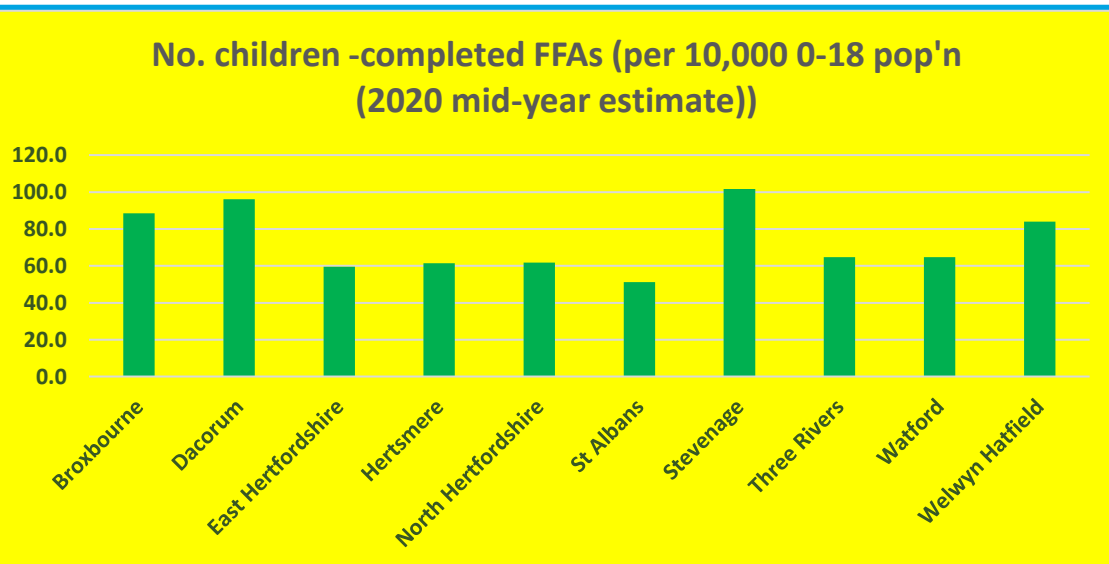
Between January and December 2021, 1,033 children were supported through 'short term work'. In these instances, shorter early help interventions are found to be more appropriate. These can be for stand alone support or can form part of a FFA. Completed short term work interventions result in the continuation of support by services at an appropriate level.

Families First Assessments (January 2021 – December 2021)

No. of children in completed FFAs



<i>District</i>	No. Children	Children per 10,000 (2019 Mid Year Estimates)
Broxbourne	197	88.6
Dacorum	342	96.2
East Hertfordshire	200	59.5
Hertsmere	155	61.5
North Hertfordshire	180	61.8
St Albans	190	51.2
Stevenage	207	101.7
Three Rivers	139	64.7
Watford	155	64.8
Welwyn Hatfield	218	83.9
TOTAL	1,983	72.2



Families First Assessments (FFA) finalised

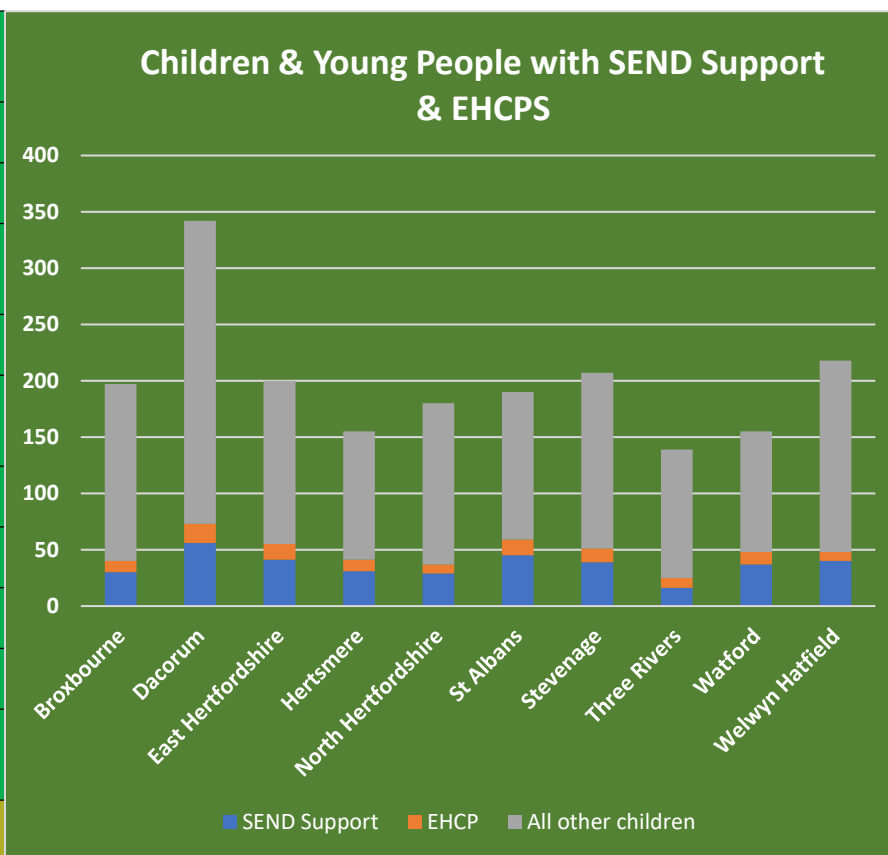
By lead agency and District / Borough



Families	Carers in Herts	VCS (CHEXS)	Family Centre Service	Early Years provider	FF Triage / Co-ordinator	Intensive Family Support	School / ESC / School Partnership	For Baby's Sake	Services for Young People	TOTAL
Broxbourne		5	7		12	40	19	2	1	86
East Hertfordshire			16		13	40	20	1		90
Stevenage			6		12	40	19	9		86
North Hertfordshire	1		9		5	25	29	5		74
Dacorum			5		12	64	52	1		134
St. Albans			4		8	22	48		1	83
Welwyn Hatfield			3	1	5	31	39	11		90
Hertsmere	2		6		4	37	11		5	65
Watford					4	55	8		2	69
Three Rivers			4		3	40	9			56
TOTAL	3	5	60	1	78	394	254	29	9	833

FFA – SEND SUPPORT & EHCP needs (All children & Young People): January – December 2021

	SEND Support	EHCP	All other children	Total
Broxbourne	30	10	157	191
Dacorum	56	17	269	303
East Hertfordshire	41	14	145	214
Hertsmere	31	10	114	175
North Hertfordshire	29	8	143	207
St Albans	45	14	131	236
Stevenage	39	12	156	207
Three Rivers	16	9	114	157
Watford	37	11	107	152
Welwyn Hatfield	40	8	170	244
Hertfordshire	364	113	1,506	1,983



Families First Assessments (FFA) finalised

By children's ethnicity & District / Borough



	Asian or Asian British - Bangladeshi	Asian or Asian British - Indian	Asian or Asian British - Pakistani	Asian/Asian British - any other Asian bg	Black or Black British - African	Black or Black British - Caribbean	Black/Black British - any other Bl b/grn	Mixed - any other Mixed background	Mixed - White and Asian	Mixed - White and Black African	Mixed - White and Black Caribbean	Other Ethnic Groups - Chinese	Other Ethnic Groups - other Ethnic group	White - any other White background	White - British	White - Gypsy/Roma	White - Irish	Not Recorded	Total
Broxbourne			2		24	7	7	8	1	7	6		3	10	114		4	4	197
Dacorum			10	4	9	9		13	7	1	7			6	265	2	3	6	342
East Hertfordshire	3			4	4	2		5		4	2	2		5	164	4		1	200
Hertsmere			2	2	11	1		7	3	2	3			6	107	11			155
North Hertfordshire			1	2	6	2		1		9	10				148			1	180
St Albans	5	1	3	5	3	2		10	6	2	6		2	6	139				190
Stevenage			2	2	3		4	5	2	2	4		2	9	172				207
Three Rivers	1	3		7	4	1		12			4			12	95				139
Watford		5	13	7	18	6	1	4		7	10		4	9	68	3			155
Welwyn Hatfield					8		1	2	4	12	7		1	4	177	2			218
Total	9	9	33	33	90	30	13	67	23	46	59	2	12	67	1449	22	7	12	1983
% Total	0.45	0.45	1.66	1.66	4.54	1.51	0.66	3.38	1.16	2.32	2.98	0.10	0.61	3.38	73.07	1.11	0.35	0.61	
2011 % pop'n (Herts)	0.5	2.6	1.1	1.6	1.8	0.8	0.3	0.6	0.8	0.3	0.8	0.8	0.4	5.1	80.8	0.1	1.5		

Presenting needs and outcomes



93% of FFAs include at least one member of the family with a mental health and / or an emotional wellbeing need. Over 60% of FFAs include issues about domestic abuse & family conflict, education (attendance issues / exclusions) and other health & wellbeing.



The most frequently recorded primary needs for children are unmet mental health / emotional wellbeing needs, family relationships & behaviour.



The outcome success rate following the completion of FFAs for the period between January and December 2021 was 72%. 12% of families disengaged or withdrew consent; however it is often found that much has been achieved prior to disengagement. 16% of FFAs result in cases transferred to LCS for support from Specialist & Safeguarding Services.

Presenting needs (family level) in completed FFAs

% of cases with each need by district (Comparison to preceding 12 months : Red = + 5 ppts, Green = - 5 ppts.)



DISTRICT	Children in need of help	Mental health / emotional wellbeing	Drug & Alcohol misuse	Sexual Health	Other health and wellbeing	Education	Out of work	Money Issues	Housing	Domestic Abuse / family conflict	ASB / Crime	Young Carer	Neglect	Number of families
Broxbourne	24.4	96.5	30.2	7.0	58.1	66.3	62.8	44.2	61.6	70.9	26.7	17.4	7.0	86
East Hertfordshire	23.3	93.3	25.6	7.8	66.7	74.4	51.1	36.7	50.0	73.3	18.9	6.7	7.8	90
Stevenage	41.9	97.7	30.2	8.1	66.3	68.6	51.2	43.0	48.8	76.7	23.3	19.8	12.8	86
North Hertfordshire	40.5	91.9	33.8	12.2	70.3	70.3	45.9	45.9	54.1	75.7	18.9	23.0	6.8	74
Dacorum	24.6	88.1	22.4	6.0	58.2	64.2	54.5	53.7	50.0	64.9	17.2	8.2	9.7	134
St. Albans	21.7	91.6	20.5	2.4	62.7	72.3	56.6	48.2	36.1	68.7	14.5	16.9	10.8	83
Welwyn Hatfield	37.8	90.0	20.0	5.6	64.4	56.7	40.0	37.8	36.7	77.8	20.0	24.4	11.1	90
Hertsmere	46.2	96.9	29.2	16.9	84.6	80.0	55.4	52.3	58.5	75.4	26.2	23.1	24.6	65
Watford	82.6	94.2	30.4	8.7	50.7	60.9	59.4	33.3	55.1	78.3	26.1	7.2	5.8	69
Three Rivers	67.9	92.9	26.8	12.5	64.3	71.4	48.2	41.1	39.3	73.2	14.3	8.9	5.4	56
TOTAL	38.2	92.9	26.4	8.2	64.0	67.9	52.6	44.2	49.0	72.9	20.4	15.2	10.1	833

Primary presenting identified need recorded for children & young people (FFAs)

	Broxbourne	Dacorum	East Hertfordshire	Hertsmere	North Hertfordshire	Stevenage	St Albans	Three Rivers	Watford	Welwyn Hatfield	Grand Total
A low income family	7	9	2	1	1	2	6	4		5	32
ADHD/ASD	8	18	12	8	19	15	17	3	6	13	106
Behaviour	8	37	15	20	13	26	13	13	16	19	161
Bereavement	2	5					2	1	1	1	11
Child previously missing		1		1			1				3
Child with mental ill health or emotional well-being issues (undiagnosed)	31	55	30	35	24	20	27	67	77	34	366
Child/Young Person alcohol and/or substance misuse				1	1					1	2
Child/Young Person bullying		1							2		3
Child/Young Person developmental delay	1	4	4	4	6	6	5	1	1	1	32
Child/Young Person ill health, complex health needs and multiple disabilities	1	7	6	3	6	6	3	1	3	4	36
Child/Young Person involved in anti-social behaviour	2	1	1				1				5
Child/Young Person involved in gang activity			1	1							2
Child/Young Person learning disability	4	4		1	1	6	1	2	3	2	22
Child/Young Person mental ill health (diagnosed)	6	5	7	3	4	4	8		4	4	41
Child/Young Person physical disability	1	2			1				1	2	5
Child/Young Person school attendance below 90%	3	7	14	7	7	3	5	3		10	49
Child/young person Self Harming	1	1			1			1			4
Child/Young Person underage sexual activity or unsafe sexual behaviour	1				1		1	1	3		7
Domestic violence/abuse	14	5	10	6	10	28	1			21	74
Educational needs	2	6	6	4	9	1	5	2	3	3	38
Emotional harm	4	23	5	3	8	10	5	2	1	7	61
Family Breakdown	2		2	2						1	6
Family relationships	12	45	21	12	30	18	23	7	5	33	173
Living in poor or overcrowded housing / homelessness	30	30	14	8	6	15	10		4	9	117
Missing education/absent	3	6	2	8	3	4	9	2	3	7	40
NEET	1			2		2					5
Neglect	4	6	6	1	1	11	2	6	3	3	40
Parent/Carer deceased		3	1			1					5
Parental alcohol and/or substance misuse	4										4
Parental mental ill health issues (diagnosed)	3						1				4
Parental mental ill health or emotional well-being issues (undiagnosed)			1								1
Parental/Carer ill-health or longstanding limiting illness	2										2
Parenting capacity	3			1							4
Partner with mental ill health or emotional well-being issues			1								1
Physical harm	1		4	2	1	1		1	5	1	15
Risk of FGM				1							1
Risk of radicalisation								1			1
Sexual Exploitation					1						1
Sexual harm				1							1
Social Isolation	2	2		1			1	2			8
Teenage Pregnancy	2										2
Transition	1			2				1	1	1	5
Young Carer	3	3	1	4	3	4	3			5	21
Young Person offending									1		1
Grand Total	169	286	166	143	157	183	150	121	143	187	1518

Primary presenting identified need recorded for adults (FFAs)

	Broxbourne	Dacorum	East Hertfordshire	Hertsmere	North Hertfordshire	Stevenage	St Albans	Three Rivers	Watford	Welwyn Hatfield	Grand Total
A low income family	3	7	2	1	4		2			7	26
ADHD/ASD					1						1
Behaviour	1					2					3
Bereavement	2	3	2		1		1	1	1	1	12
Child with mental ill health or emotional well-being issues (undiagnosed)	1										1
Child/Young Person alcohol and/or substance misuse									1		1
Child/Young Person mental ill health (diagnosed)									1		1
Domestic violence/abuse	12	20	12	10	18	25	12	9	11	30	159
Family Breakdown	12	15	3	3	7	4	13	4	4	5	70
Family relationships	1		3	1		1		2		4	12
Inability to afford a number of food and clothing items				1				1		1	3
Living in poor or overcrowded housing / homelessness	16	14	13	6	4	8	15	2	1	5	84
NEET	1										1
Neglect						1					1
No one in the family is in work	1	3	1	2	1	1		3			12
Parent carer Learning disability	1	1	2	1		2				1	8
Parental alcohol and/or substance misuse	9	6	4	4	2	4	3	2	5	3	42
Parental conflict	1										1
Parental mental ill health issues (diagnosed)	10	16	6	8	8	9	10	8	13	5	93
Parental mental ill health or emotional well-being issues (undiagnosed)	17	19	19	4	21	13	17	3	8	12	133
Parental/Carer disability	2	5	1	1	1	2	2	1	1	2	18
Parental/Carer ill-health or longstanding limiting illness	2	8	4	4	4	3	1		2	3	31
Parental/Carer involvement in anti-social behaviour	4					1					5
Parental/Carer offending/imprisonment		1									1
Parenting capacity	19	48	28	31	34	31	32	38	36	36	333
Partner with mental ill health or emotional well-being issues		4	4		4	3	7	2	2	3	29
Sibling with no support need	4			1	2		2	1	1	1	12
Social Isolation	1		1	5				1			8
Young Person offending			1								1
Grand Total	120	170	106	83	112	110	117	78	87	119	1102

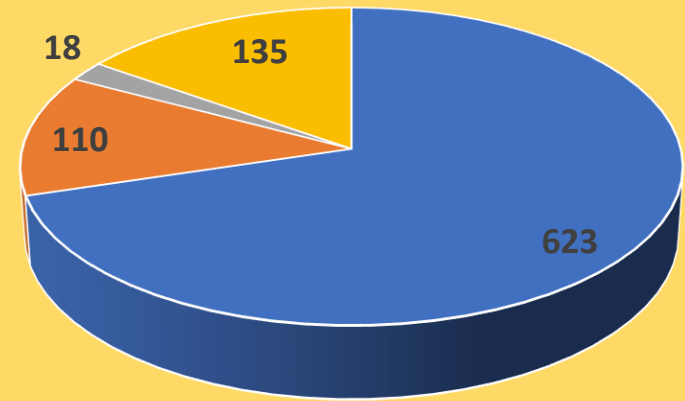
FFA closure/outcome: January 2021 – December 2021

By District



DISTRICT	Successful outcome (s)	Disengaged / consent withdrawn	Moved away from county	LCS transfer	TOTAL	% success
Broxbourne	62	13	7	15	97	69%
East Hertfordshire	70	12	2	14	98	73%
Stevenage	60	15	1	16	92	66%
North Hertfordshire	63	7	1	16	87	73%
Dacorum	99	10	3	19	131	77%
St. Albans	59	15	1	15	90	66%
Welwyn Hatfield	65	11	0	16	92	71%
Hertsmere	50	7	1	6	64	79%
Watford	50	11	1	10	72	70%
Three Rivers	45	9	1	8	63	73%
TOTAL	623	110	18	135	886	72%

Hertfordshire FFA outcomes



- Successful outcome (s)
- Disengaged / consent withdrawn
- Moved away from county
- Step up

Presenting needs recorded for children & young people supported by Short Term work (%)

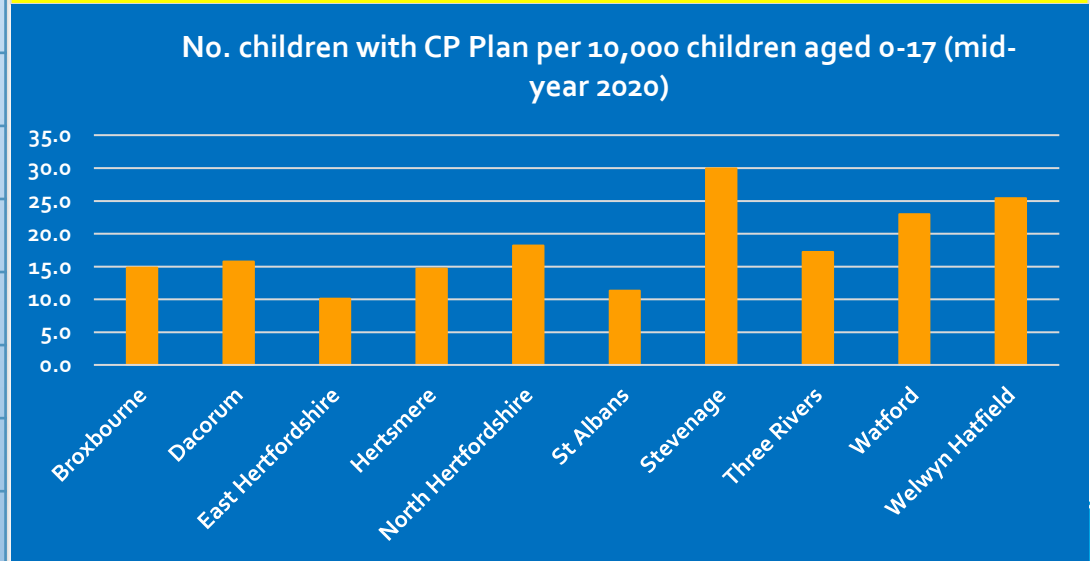
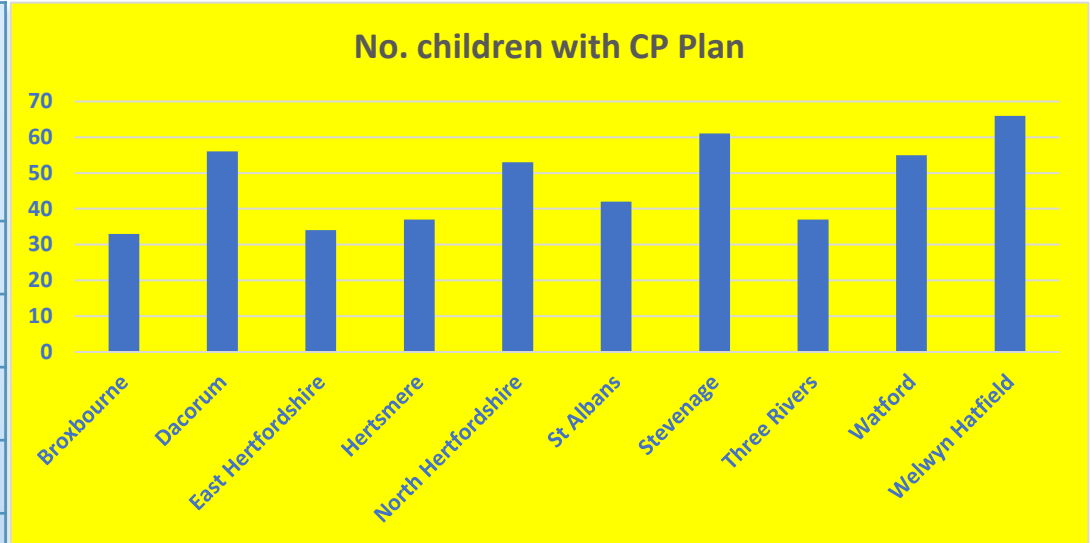
DISTRICT	Children in need of help	Mental health / emotional wellbeing	Drug & Alcohol misuse	Other health and wellbeing	Education	Out of work	Money Issues	Housing	Domestic Abuse / family conflict	ASB / Crime	Young Carer	Neglect	Number of children
Broxbourne	8.9	34.2	5.1	6.3	7.6	0.0	27.8	41.8	12.7	12.7	8.9	8.9	79
East Hertfordshire	0.0	19.5	0.0	7.3	2.4	0.0	12.2	48.8	2.4	7.3	7.3	9.8	41
Stevenage	4.3	28.3	0.0	2.2	2.2	2.2	10.9	41.3	15.2	2.2	6.5	6.5	46
North Hertfordshire	7.0	14.0	9.3	14.0	14.0	0.0	14.0	16.3	7.0	2.3	2.3	4.7	43
Dacorum	12.5	37.7	0.6	20.2	12.5	1.2	7.8	7.2	4.4	0.3	15.9	1.6	321
St. Albans	8.2	21.1	2.1	40.2	12.4	2.1	7.2	2.1	4.6	0.5	27.3	3.6	194
Welwyn Hatfield	8.5	45.7	1.8	14.0	11.0	3.7	15.9	17.7	18.9	1.8	6.7	0.0	164
Hertsmere	26.7	37.3	4.0	30.7	26.7	1.3	6.7	18.7	0.0	5.3	17.3	0.0	75
Watford	0.0	37.5	0.0	8.3	0.0	4.2	0.0	12.5	16.7	0.0	16.7	0.0	24
Three Rivers	19.6	52.2	0.0	10.9	8.7	2.2	6.5	4.3	19.6	0.0	8.7	0.0	46
TOTAL	10.7	34.1	1.9	20.4	11.6	1.7	10.7	14.9	8.5	2.3	14.5	2.7	1,033

Child Protection Plans (at 2 February 2022)

Child Protection Plans by District



District	Count of CP Plans	Children per 10,000 (2020/9 Mid Year Estimates)
Broxbourne	33	14.8
Dacorum	56	15.7
East Hertfordshire	34	10.1
Hertsmere	37	14.7
North Hertfordshire	53	18.2
St Albans	42	11.3
Stevenage	61	30.0
Three Rivers	37	17.2
Watford	55	23.0
Welwyn Hatfield	66	25.4
Other	44	
Hertfordshire	474+44	18.9



Practitioners trained on EHM (to 31 January 2022)

By District & Agency

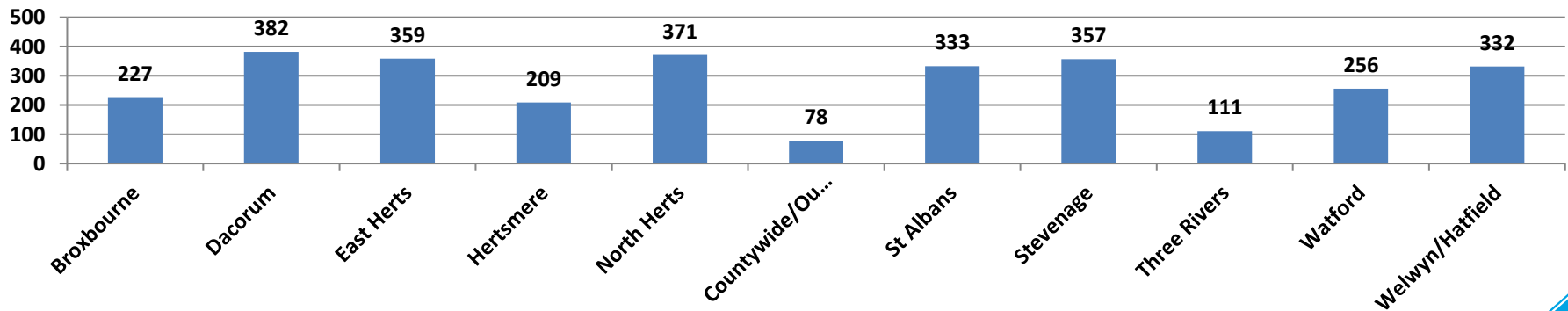


Number of non HCC practitioners by District	Rolling Total
Broxbourne	227
Dacorum	382
East Herts	359
Hertsmere	209
North Herts	371
Countywide/Out of County	78
St Albans	333
Stevenage	357
Three Rivers	111
Watford	256
Welwyn/Hatfield	332
Total	3,015

District/Agency	Total
Early Years	246
Family Centre	256
Education	1593
Education Support Centre	80
LSP	177
Health	432
Housing/District Council	76
Voluntary	48
Justice & Crime Prevention	28
Countywide/Out of County	78
DSPL	1
Total	3,015

Staff with HCC email address trained : 475

Number of non HCC practitioners trained by District (Rolling from Sept 2016)



Early Help Cases

In total 328 young people have been supported by SASH teams on EHM the last quarter which is a 6.8% increase in open cases compared to last quarter (308). Of the 328 cases open this quarter, 135 were new cases (41.2%), down from 158 last quarter. 10.4% (15) of the 135 new allocations this quarter have previously been open to SASH within the last 12 months.

There was an increase in young people presenting with Behaviour issues as their primary reason for support in Quarter 2, other needs which have seen an increase include ASD/ADHD, education needs and mental/emotional health issues.

EHM Demographic Profile

Young people aged 14-15 continue to account for half of the cases open to SASH, followed by the 11-13 age group who make up 27.6% of the open cases this quarter and 16-17-year-olds who accounted for 22.4%. 29% of young people supported by SASH were from BAME groups, which is 2 percentage points higher than last quarter (27%).

There was an increase in young people presenting with mental health issues and parenting concerns as their primary reason for support in Quarter 3, however family relationships and family breakdown continue to be the main presenting need for young people requiring a Families First Assessment.

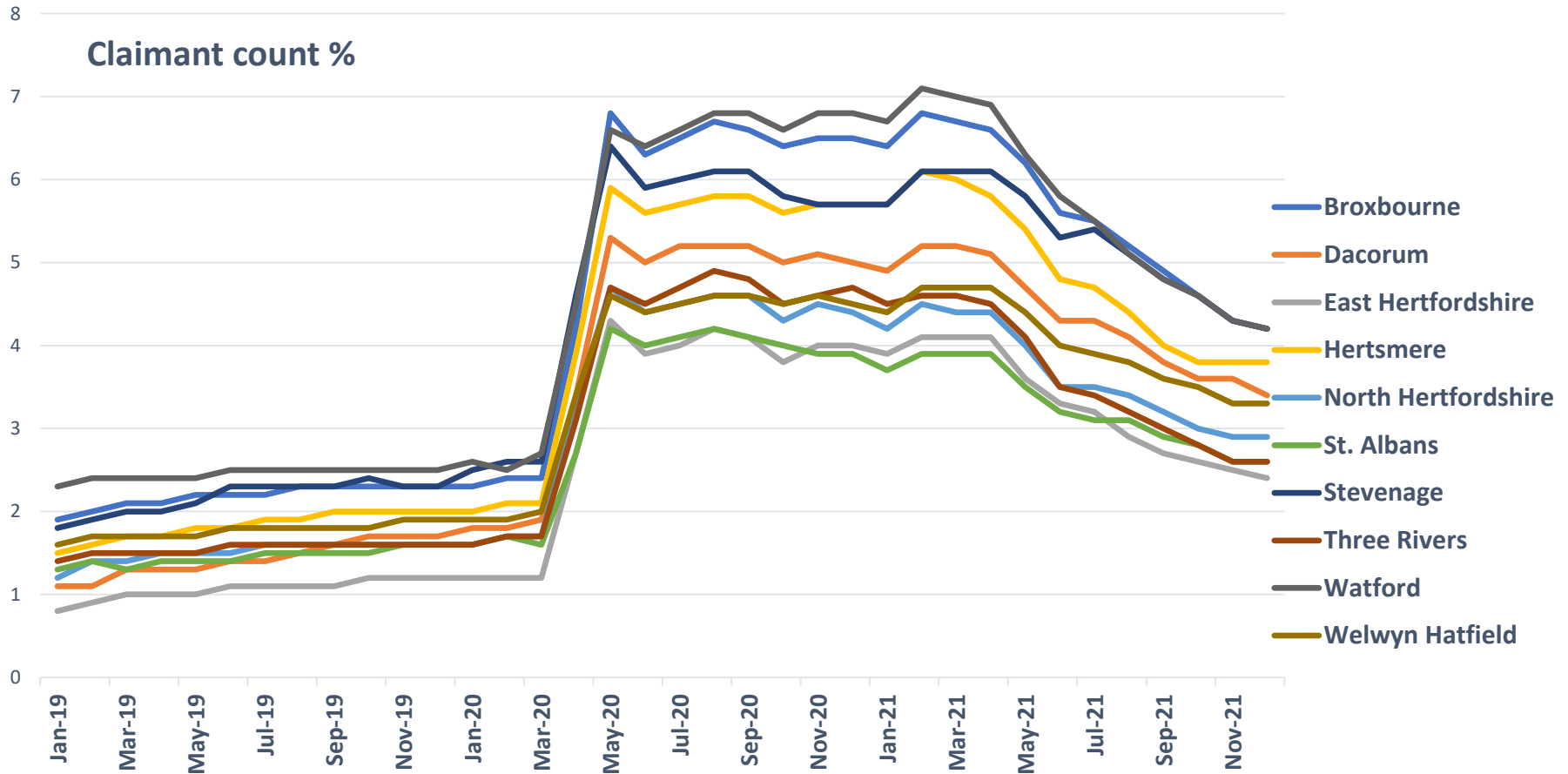
Active Early Help Cases

As at the end of December 2021 SASH teams were actively working with 159 young people and their families as Families First Episodes, which is down 17% from last quarter (193) and 8.6% less than last year (174).

Claimant count % (not seasonally adjusted)

By District – January 2019 – December 2021

(county increase from 1.9% - 3.4% between March 2020 & Dec. 2021)



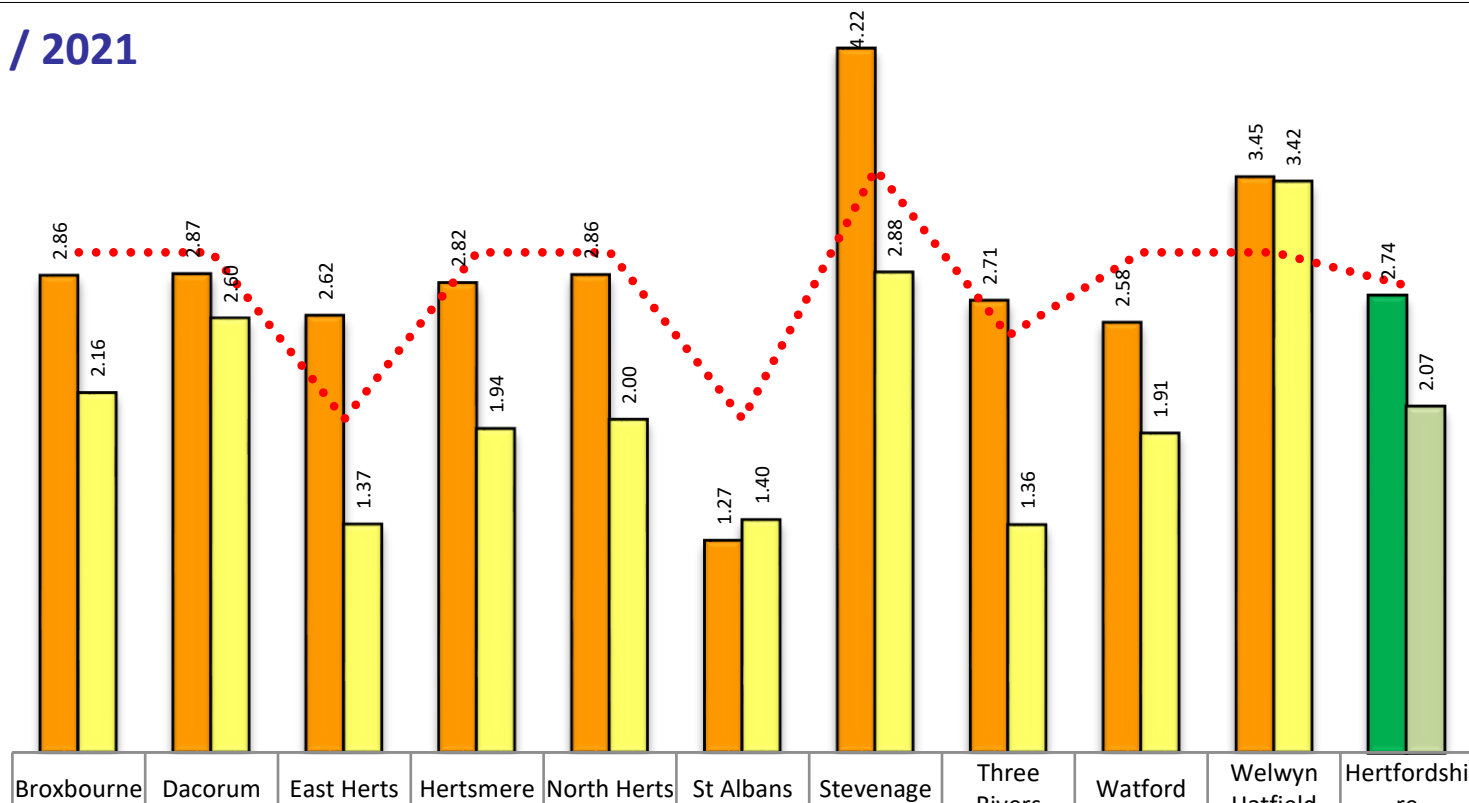
Broxbourne and Watford have the highest claimant count rate, as of September 2021, at 4.2%; the lowest is East Herts at 2.4%. The Hertfordshire rate for 18-24 year olds is 4.4% (September 2021); this was 2.7% in March 2020.

16-18 NEET (Years 12 & 13): January 2020 & January 2021

By District



NEET % - 2020 / 2021



NEET % 31/01/21	2.86	2.87	2.62	2.82	2.86	1.27	4.22	2.71	2.58	3.45	2.74
NEET % 31/01/22	2.16	2.60	1.37	1.94	2.00	1.40	2.88	1.36	1.91	3.42	2.07
NEET Target 2021/22	3	3	2	3	3	2	3.5	2.5	3	3	2.8

In addition to the NEET rate falling from 2.74% to 2.09% in the last 12 months, the in-learning rate has risen during the same period from 94.3% to 94.8%. The lost contact rose negligibly from 0.82% in January 2021 to 0.85% in January 2022.